



DEA No. RA0571996
FL License # CMTL-0003
CLIA No. 10D1094068

Certificate of Analysis

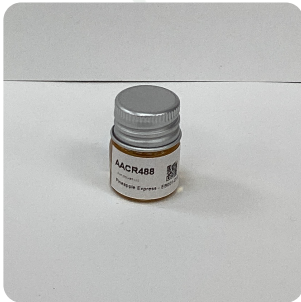
Compliance Test

Pastel Cartel
13326 Immanuel Rd
Pflugerville, Texas 78660

Batch # Pineapple Express - EB-001-D10 Test Reg State: Florida
Batch Date: 2022-04-05
Extracted From: Hemp

Order # PUR220407-090001
Order Date: 2022-04-07
Sample # AACR488

Sampling Date: 2022-04-08 Initial Gross Weight: 12.063 g
Lab Batch Date: 2022-04-08
Completion Date: 2022-04-14



Product Image

Potency
Tested

**Delta 8/Delta 10
Potency 13**

Specimen Weight: 52.750 mg

Analyte	LOD (%)	LOQ (%)	Result (mg/g)	(%)
Delta6a10a-THC	8.469E-5	0.0015	564.800	56.480
Delta-8 THC	2.600E-5	0.0015	179.700	17.970
Delta-10 THC	3.000E-6	0.0015	37.500	3.750
CBD	5.400E-5	0.0015	12.800	1.280
CBC	1.800E-5	0.0015		<LOQ
THCV	7.000E-6	0.0015		<LOQ
Delta-9 THC	1.300E-5	0.0015		<LOQ
CBN	1.400E-5	0.0015		<LOQ
CBGA	8.000E-5	0.0015		<LOQ
CBG	2.480E-4	0.0015		<LOQ
CBDV	6.500E-5	0.0015		<LOQ
CBDA	1.000E-5	0.0015		<LOQ
THCA	3.200E-5	0.0015		<LOQ

Tested
(LCUV)

Potency Summary

Total Delta 8 17.970%	Total Delta 10 3.750%
Total THC None Detected	Total CBD 1.280%
Total CBG None Detected	Total CBN None Detected
Other Cannabinoids 56.480%	Total Cannabinoids 79.480%

Xueli Gao
Ph.D., DABT Lab Toxicologist

Aixa Sun Lab Director/Principal Scientist
D.H.Sc., M.Sc., B.Sc., MT (AAB)



Definitions and Abbreviations used in this report: *Total CBD = CBD + (CBD-A * 0.877), *Total CBDV = CBDV + (CBDVA * 0.87), *Total THC = THCA-A * 0.877 + Delta 9 THC, *Total THCV = THCV + (THCVA * 0.87), *CBG Total = (CBGA * 0.877) + CBG, *CBN Total = (CBNA * 0.877) + CBN, *Total CBC = CBC + (CBCA * 0.877), *Total THC-O-Acetate = Delta 8 THC-O-Acetate + Delta 9 THC-O-Acetate, *Other Cannabinoids Total = Total Cannabinoids - All the listed cannabinoids on the summary section, *Total Detected Cannabinoids = Delta6a10a-THC + Delta8-THC + Total CBN + CBT + Delta8-THCV + Total CBG + Total CBD + Total THCV + CBL + Total THC + Total CBC + Total CBDV + Delta10-THC + Total THC-O-Acetate, *Analyte Details above show the Dry Weight Concentrations unless specified as 12% moisture concentration. (mg/ml) = Milligrams per Milliliter, LOQ = Limit of Quantitation, LOD = Limit of Detection, Dilution = Dilution Factor (ppb) = Parts per Billion, (%) = Percent, (cfu/g) = Colony Forming Unit per Gram (cfu/g) = Colony Forming Unit per Gram, , LOD = Limit of Detection, (µg/g) = Microgram per Gram (ppm) = Parts per Million, (ppm) = (µg/g), (aw) = aw (area ratio) = Area Ratio, (mg/Kg) = Milligram per Kilogram, *Measurement of Uncertainty = +/- 10%

This report shall not be reproduced, without written approval, from ACS Laboratory. The results of this report relate only to the material or product analyzed. Test results are confidential unless explicitly waived otherwise. Accredited by a third-party accrediting body as a competent testing laboratory pursuant to ISO/IEC 17025 of the International Organization for Standardization.